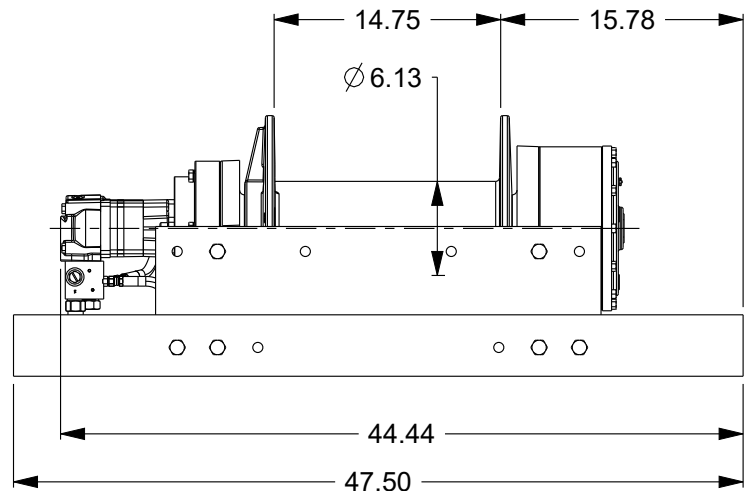
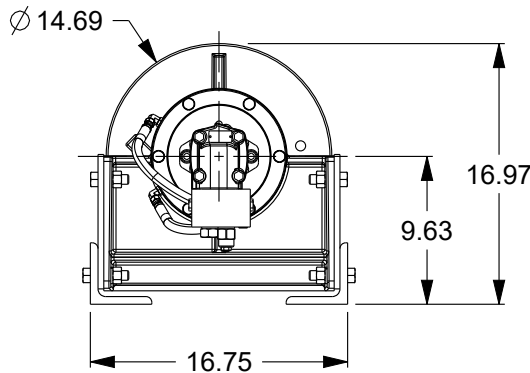
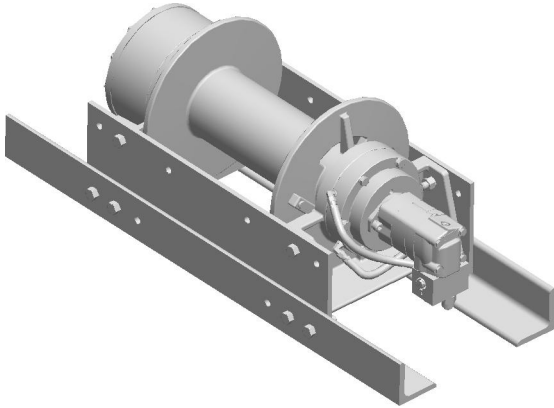


Planetary Winch

Model Code: 30BBX1L2F

Est Weight: 610 lb October 18, 2020



B Drum Capacities (ft)

Layer	Ø 9/16" Wire Rope	Ø 5/8" Wire Rope	Ø 3/4" Wire Rope
1	41	38	32
2	90	82	71
3	145	133	116
4	207	192	169
5	276	257	229
6	352	329	-
7	435*	-	-

Drum capacities are in accordance with SAE J706
Actual capacities are usually up to 10% greater than those shown
* Layer does not meet SAE J706 standards

Motor Option #2

Line Pull (lb)	Line Speed (fpm)
30000	29
25300	35
21900	40
19300	46
17200	51
15600	56

Performance is based on 25 gpm @
2850 psi with Ø5/8" wire rope.



LANTEC

PULL-MASTER

