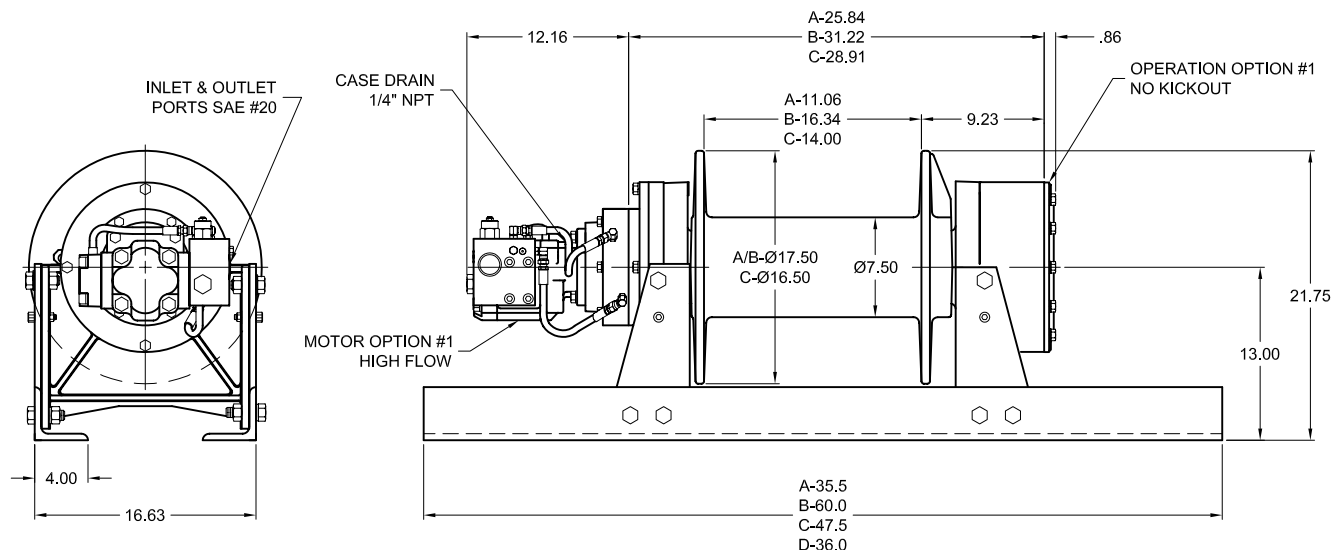




Model 45

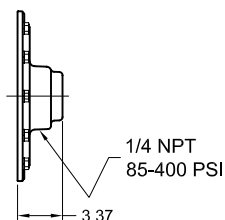
45,000 lb.



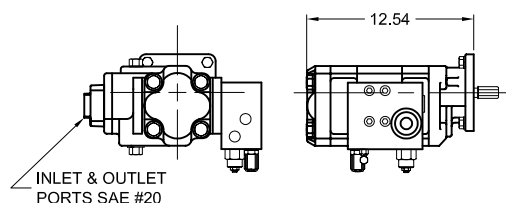
APPROX. WEIGHT: 930 lb.

OPTIONAL MOTORS

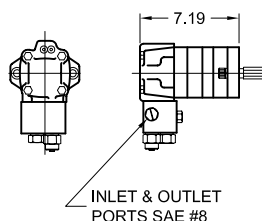
OPERATION OPTION #4 AIR/HYD KICKOUT



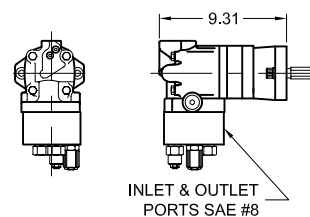
MOTOR OPTION #5 & 6 HIGH FLOW 2 SPEED MOTOR



MOTOR OPTION #2 LOW FLOW MOTOR



MOTOR OPTION #3 & 9 LOW FLOW 2 SPEED MOTOR



Contact your dp sales representative for additional options and features not shown.

Because of continued product improvement, we reserve the right to make changes without notice.

⚠ WARNING	⚠ CAUTION
Winches are not intended to be used for the lifting or moving of persons.	The last 5 wraps cable must be left on the drum to assist the cable clamp in holding the load.

dp Winch is a part of the Tulsa Winch Group, a worldwide provider of winch systems and electronic load information systems.

P.O.Box 1130
Jenks, OK 74037-1130
Voice: 918-298-8300
Fax: 918-298-8301
www.dpwinch.com





Model 45

45,000 lb.

MOTOR OPTION #1 - HIGH FLOW

LAYER	LINE PULL (lbs)	LINE SPEED (fpm)
1	45000	40
2	38100	48
3	33000	55
4	29100	62
5	26100	69
6	23600	77

Performance is based on 60 gpm @ 2600 psi with Ø3/4" wire rope.

MOTOR OPTION #2 - LOW FLOW

LAYER	LINE PULL (lbs)	LINE SPEED (fpm)
1	45000	18
2	38100	21
3	33000	25
4	29100	28
5	26100	31
6	23600	34

Performance is based on 25 gpm @ 2800 psi with Ø3/4" wire rope.

2 SPEED MOTOR OPTIONS #5 & 6 - HIGH FLOW

LAYER	LINE PULL (lbs)		LINE SPEED (fpm)	
	LOW	HIGH	LOW	HIGH
1	45000	22500	30	60
2	38100	19000	36	71
3	33000	16500	41	82
4	29100	14600	47	93
5	26100	13000	52	104
6	23600	11800	58	115

Performance is based on 45 gpm @ 2600 psi with Ø3/4" wire rope.

2 SPEED MOTOR OPTIONS #3 & 9 - LOW FLOW

LAYER	LINE PULL (lbs)		LINE SPEED (fpm)	
	LOW	HIGH	LOW	HIGH
1	45000	22500	18	36
2	38100	19000	21	43
3	33000	16500	25	50
4	29100	14600	28	56
5	26100	13000	31	63
6	23600	11800	35	69

Performance is based on 24 gpm @ 2850 psi with Ø3/4" wire rope.

DRUM CAPACITIES - FT.

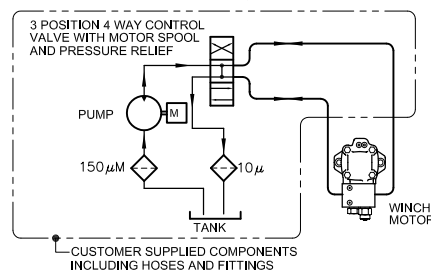
LAYER	Ø3/4" WIRE ROPE			Ø7/8" WIRE ROPE		
	A	B	C	A	B	C
1	29	42	36	25	37	32
2	63	92	79	55	81	70
3	102	150	129	90	134	115
4	146	216	185	131	194	166
5	195	289	247	177	261	224*
6	250*	370*	317*	-	-	-

Drum capacities are in accordance with SAE J706.

Actual capacities are usually up to 10% greater than those shown.

* Layer does not meet SAE J706.

TYPICAL HYDRAULIC SYSTEM



The rated line pulls are for the winch only. Consult the wire rope manufacturer for wire rope ratings.

Because of continued product improvement, we reserve the right to make changes without notice.

⚠ WARNING	⚠ CAUTION
Winches are not intended to be used for the lifting or moving of persons.	The last 5 wraps cable must be left on the drum to assist the cable clamp in holding the load.

dp Winch is a part of the Tulsa Winch Group, a worldwide provider of winch systems and electronic load information systems.

P.O.Box 1130
Jenks, OK 74037-1130
Voice: 918-298-8300
Fax: 918-298-8301
www.dpwinch.com

