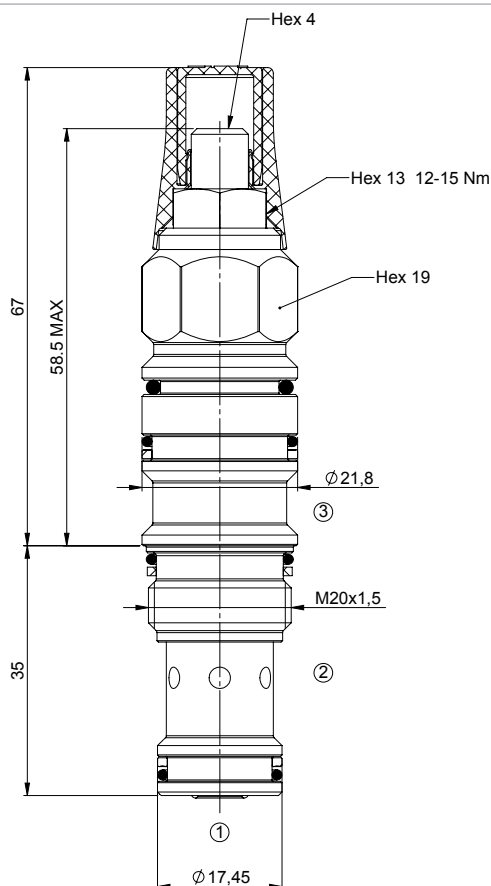
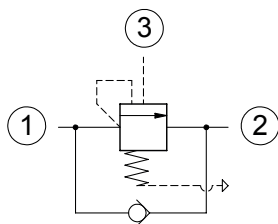
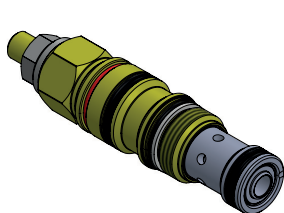




Load holding valves

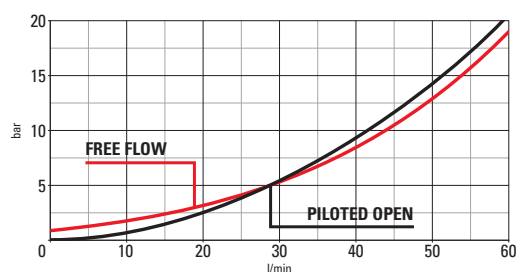
Ventilata T11A 3:1 adjustable setting



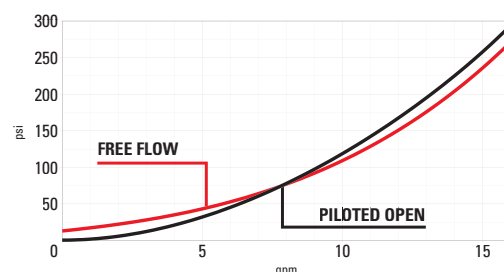
Technical Details

cavity	T11A
capacity	60 lpm (16 gpm)
max operating pressure	420 bar (6000 psi)
pilot ratio	3:1
maximum setting	350 bar (5000 psi)
minimum setting	70 bar (1000 psi)
pressure increase per turn	109 bar (spring M) 166 bar (spring D)
pressure setting established @	cracking pressure (1in3/min)
maximum valve leakage at reseal	5 drops / minute
operating characteristic	vented
reseal	>85%
maximum recommended load pressure at maximum setting	270 bar (3900 psi)
valve hex size	19
valve installation torque	40-45 Nm (30-35 lbf ft)
adjustment screw internal hex size	4
seal-lock hex size	13
seal-lock torque	12-15 Nm (9-11 lbf ft)
valve weight	0.150 Kg (0.33 lbs)
external component surface treatment	zinc plating
seal kit (nbr)	S00T11ASN90000V
seal kit (viton)	S00T11ASV90000V
temperature range	-30 to 100°C (-22 to 212°F) with BunaN seals;
fluids	Mineral-based or synthetics with lubricating properties at viscosities of 10 to 500 mm ² /s (cSt)
filtration	Nominal value max. 10µm (NAS 8) / ISO 4406 19/17/26

- Turn adjustment clockwise to increase setting
- Operations of all functions are independent of back.-pressure at port 2, thanks to the fact that the spring chamber is vented to atmosphere.
- Set your counterbalance valve at least 1.3 times the maximum load induced pressure.
- This valve is provided with positive seals on the pilot section
- Declared reseal value is obtained with valve set @ maximum setting



Performance curves



Seals and anti-tamper options

- 0 = BUNA SEALS
- 6 = BUNA tamper resistant
- 2 = VITON SEALS
- 7 = VITON tamper resistant

C | 0 | 2 | | | | | 0 | 3 | 1 | 1 | 0 | 0 | A

Setting (bar)

Spring

- M = 70-210 bar
- D = 140-350 bar

The information contained in this page is valid at the time of going to print. Valvole Italia reserves the right to modify its products without notice and does not accept liabilities for damages incurred as a consequence of these changes. To make sure you are seeing the latest product information, please visit www.valvoleitalia.it

