

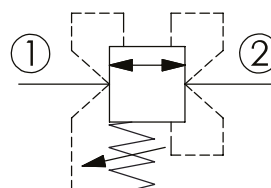
CCR-10W - Relief valve

Bi-directional direct-acting

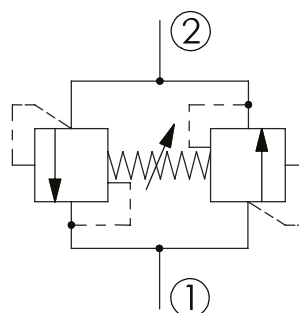
1 Available versions

Ordering example:

CCR-10W	-20	-A	-L
Type	Operation	Spring	Option



- 1 Inlet (Outlet)
- 2 Outlet (Inlet)




Operation

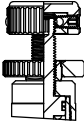
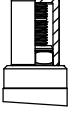
Coding	Description
20	Standard type

Spring

Coding	Pressure (bar)	
	Adjustment range	Standard setting
A	160 - 240	180
K	14 - 168	80
W	105 - 350	105

Option

Coding	Option	Drawing
L	Leakproof hex. socket screw	

Coding	Option	Drawing
K	Handknob with lock knob	
CH	Plastic tamper resistant cover of general type hex. nut	

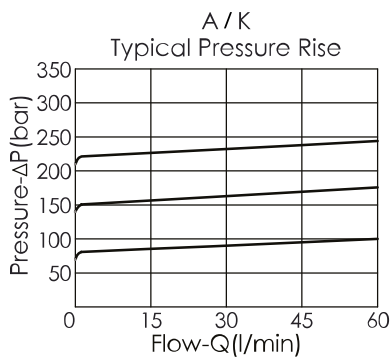
2 Technical data

Operating pressure p_{max}	350 bar
Flow rate Q_{max}	60 l/min
Installation torque	35 - 45 Nm
Cavity	10W-2
Weight	L: 0.236 kg

i INFORMATION

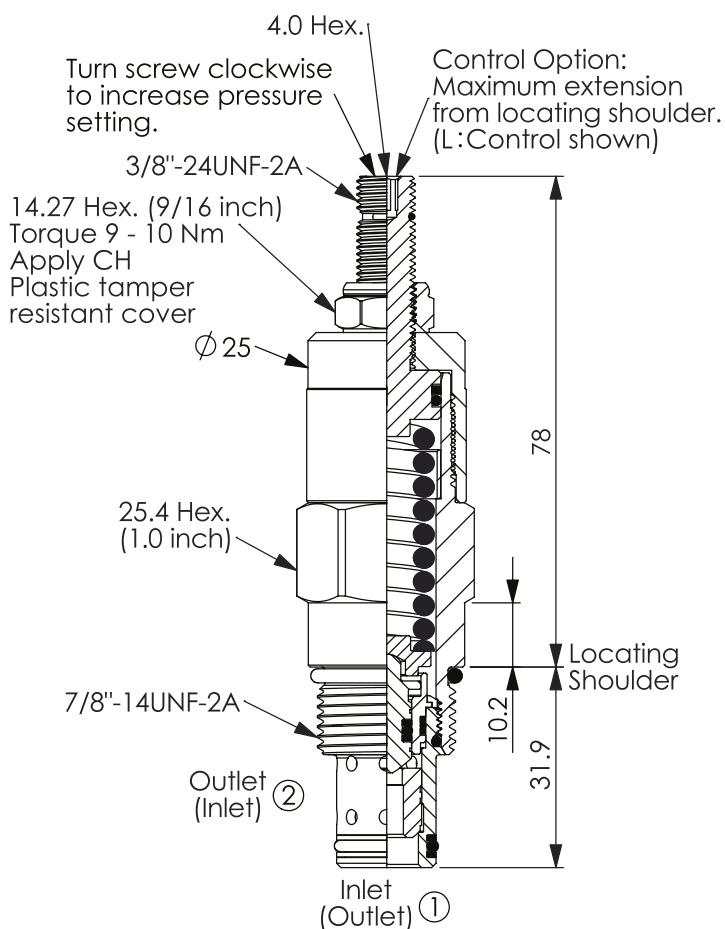
- Response time-typical (2 ms)
- Maximum leakage approximately (0.7 cm³/min)
- Dirt tolerant

Characteristic lines



3 Dimensions

All dimensions in mm, subject to change.



4 Other information

see [Technical information HAWE cartridge valves: D 8219](#)

see [Recommendation for hydraulic fluid: D 5488/1](#)

