

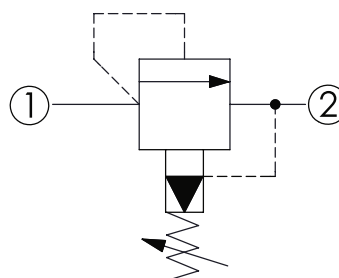
CRP-162A - Relief valve

Pilot operated balanced piston

1 Available versions

Ordering example:

CRP-162A	-20	-A	-L
Type	Operation	Spring	Option



- 1 Inlet
- 2 Outlet

Operation

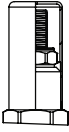
Coding	Description
20	Port 1 to 2 (P to T)

Spring

Coding	Pressure (bar)	
	Adjustment range	Standard setting
A	5 - 210	70
B	5 - 105	70
C	5 - 420	70
N	5 - 55	28
Q	5 - 28	14
W	5 - 315	70

Option

Coding	Option	Drawing
L	Leakproof hex. socket screw	
K	Handknob with lock knob	

Coding	Option	Drawing
C	Stainless steel tamper resistant cover	

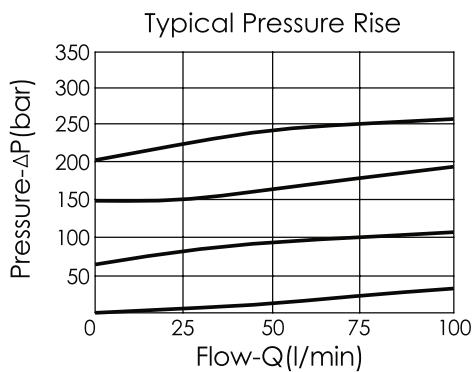
2 Technical data

Operating pressure p_{max}	350 bar
Flow rate Q_{max}	45 l/min
Installation torque	27 - 33 Nm
Cavity	T-162A
Weight	L: 0.10 kg

i INFORMATION

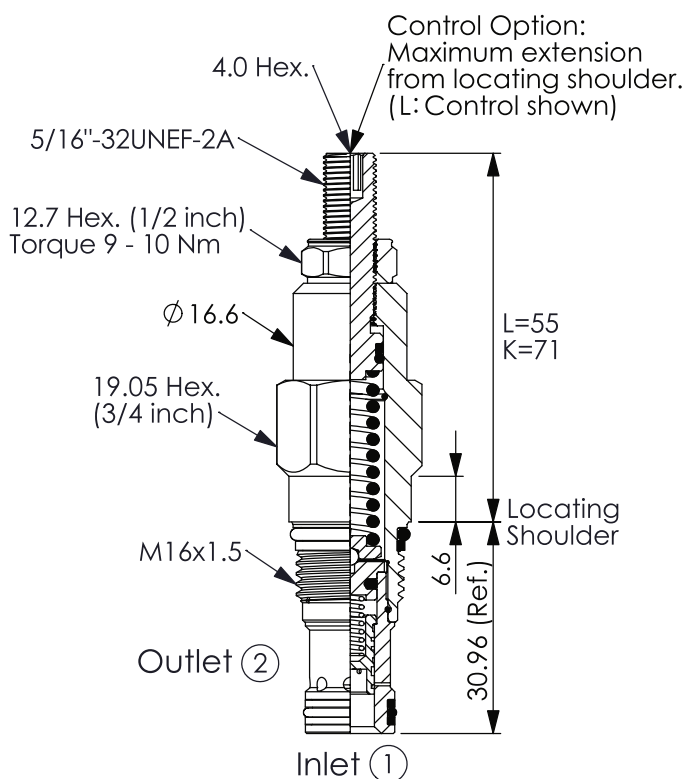
- Response time-typical (10 ms)
- Maximum leakage approximately (30 cm³/min /70 bar)
- The maximum adjustment of the screw is 6 turns. Please do not over-adjust to avoid damaging the internal components. (The maximum adjustment torque for the screw is 4 Nm)
- Will accept maximum pressure at port **2**: suitable for use in cross port relief circuits. If used in cross port relief circuits, consider spool leakage.

Characteristic lines



3 Dimensions

All dimensions in mm, subject to change.



4 Other information

see [Technical information HAWE cartridge valves: D 8219](#)

see [Recommendation for hydraulic fluid: D 5488/1](#)

