

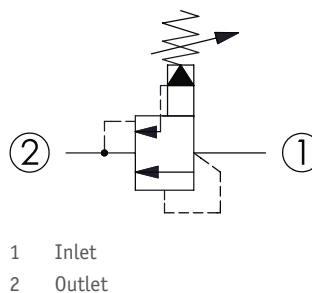
# CRQ-18A - Relief valve

Kick-down, pilot operated, balanced piston relief valve

## 1 Available versions

Ordering example:

CRQ-18A	-20	-A	-L
Type	Operation	Spring	Option



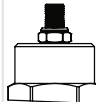
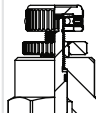
### Operation

Coding	Description
20	Standard type

### Spring

Coding	Pressure (bar)	
	Adjustment range	Standard setting
A	7 - 210	70
B	3.5 - 105	70
C	10.5 - 420	70
D	1.7 - 55	28
E	1.7 - 28	14
N	4 - 55	28
Q	4 - 28	14
W	10.5 - 315	70

### Option

Coding	Option	Drawing
L	Leakproof hex. socket screw	
K	Handknob with lock knob	

Coding	Option	Drawing
C	Stainless steel tamper resistant cover	

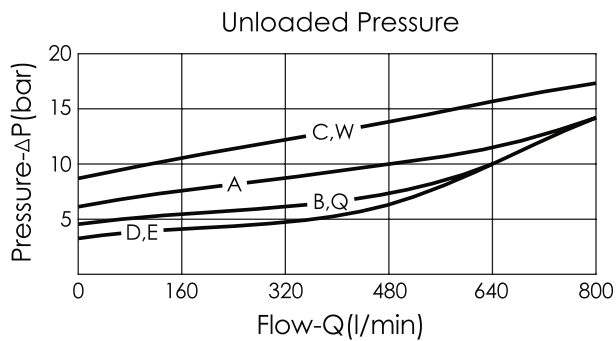
## 2 Technical data

Operating pressure $p_{max}$	350 bar
Flow rate $Q_{max}$	760 l/min
Installation torque	465 - 500 Nm
Cavity	T-18A (18AB-2)
Weight	L: 1.16 kg

### **i** INFORMATION

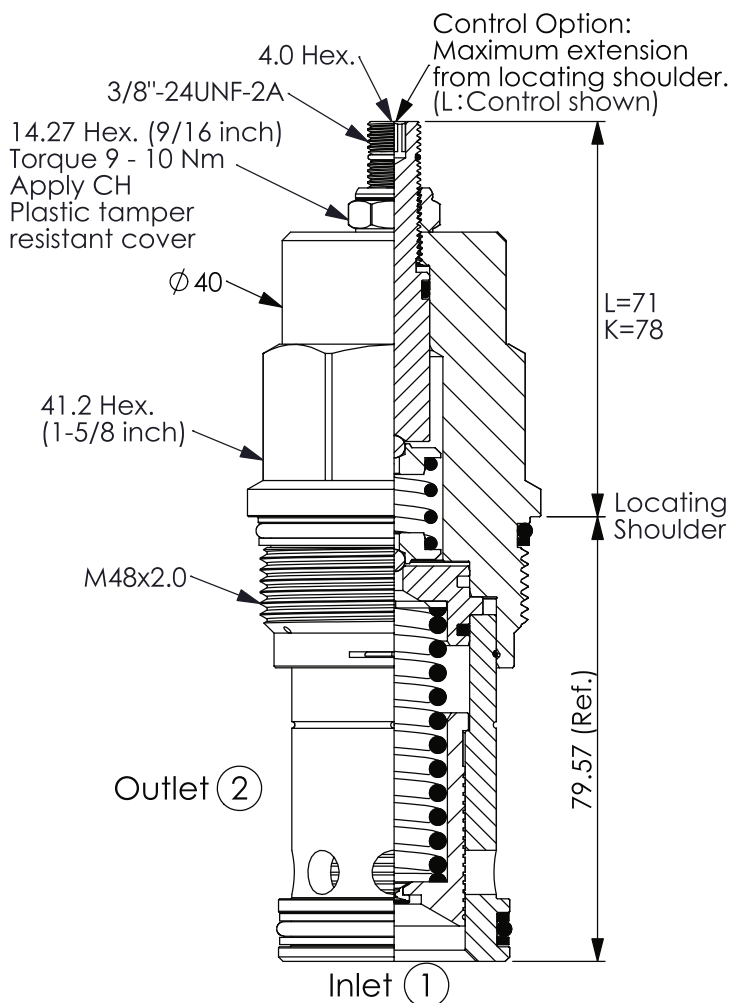
Maximum leakage approximately (80 cm<sup>3</sup>/min/70 bar)

### Characteristic lines



### 3 Dimensions

All dimensions in mm, subject to change.



### 4 Other information

see [Technical information HAWE cartridge valves: D 8219](#)

see [Recommendation for hydraulic fluid: D 5488/1](#)

