

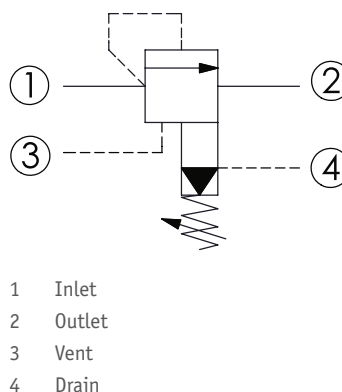
CRV-24A - Relief valve

Ventable, pilot operated, balanced piston with external drain

1 Available versions

Ordering example:

CRV-24A	-40	-A	-L
Type	Operation	Spring	Option



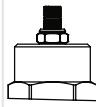
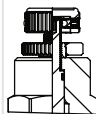
Operation

Coding	Description
40	Standard type

Spring

Coding	Pressure (bar)	
	Adjustment range	Standard setting
A	7 - 210	70
B	3.5 - 105	70
C	10.5 - 420	70
D	1.7 - 55	28
E	1.7 - 28	14
W	10.5 - 315	70

Option

Coding	Option	Drawing
L	Leakproof hex. socket screw	
K	Handknob with lock knob	

Coding	Option	Drawing
C	Stainless steel tamper resistant cover	

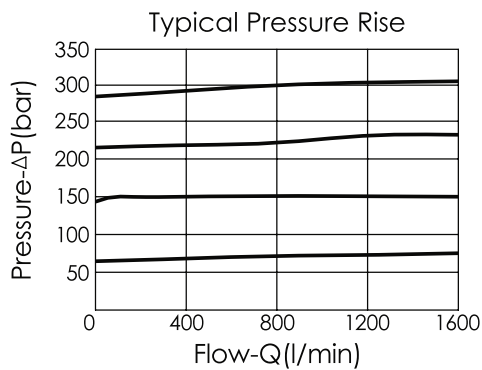
2 Technical data

Operating pressure p_{max}	350 bar
Flow rate Q_{max}	480 l/min
Installation torque	465 - 500 Nm
Cavity	T-24A (24AB-4)
Weight	L: 1.74 kg

i INFORMATION

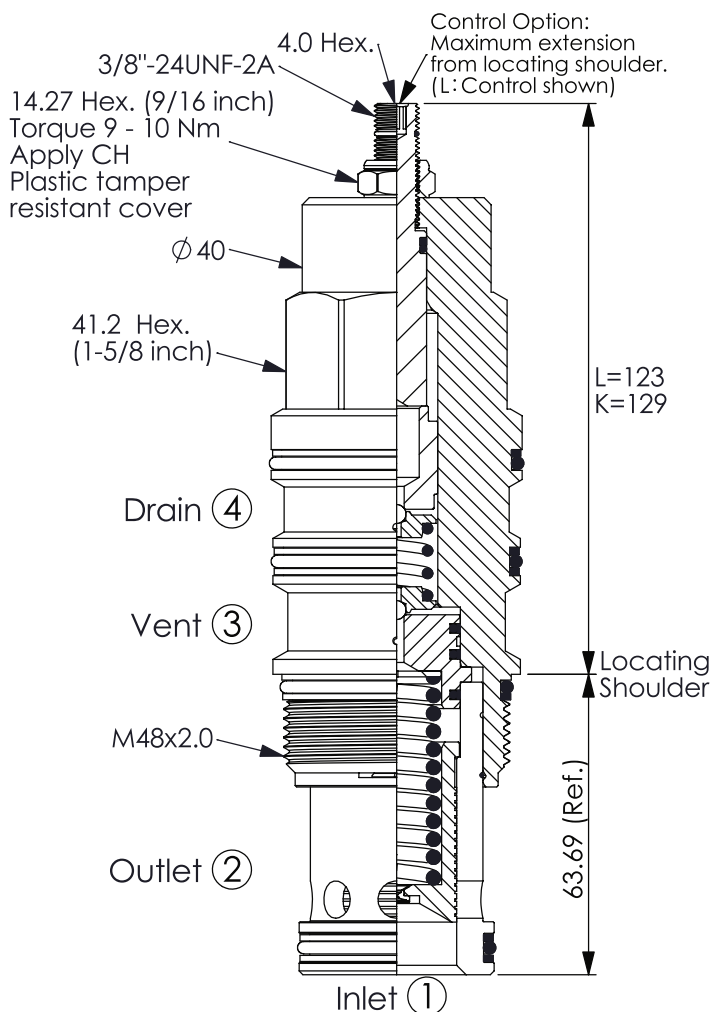
- Response time-typical (10 ms)
- Maximum leakage approximately (80 cm³/min/70 bar)

Characteristic lines



3 Dimensions

All dimensions in mm, subject to change.



4 Other information

see [Technical information HAWE cartridge valves: D 8219](#)

see [Recommendation for hydraulic fluid: D 5488/1](#)

