

# NVP00

- High Productivity – non-clogging design reduces downtime
- Strong hold – powerful vacuum up to 28"Hg [948mbar]
- Mounts Easily – compact and lightweight
- Fast Response – installs close to vacuum point
- Efficient – minimal air consumption
- Reliable operation – straight-through design with no moving parts

## Technical Data

**Fluid**  
Filtered (50 Micron) unlubricated, non-corrosive dry gases

**Operating Pressure**  
80 PSI (5.5 bar) Standard or 60 PSI (4.1 bar)

**Operating Temperature**  
-30° to ~250° F (-34° to 121°C)

**Materials**  
Pump Body: Anodized Aluminum

**Supply line**  
Min. 5/32" (4mm)

**Vacuum line**  
1/4" (6mm)

**Mounting holes**  
Mounting holes accept 4-40 [M3] screws

**Control valve**  
3 way/2 position (faster part release), minimum orifice – 0.062" [1.57mm]

**Performance level designations**  
"M" 0-20"Hg [0 to 677mbar] for medium vacuum/high flow applications  
"H" 0-28"Hg [0 to 948mbar] for high vacuum/standard flow applications

**Product options**  
Standard (NVP00)  
Pneumatic blow-off (NVPOX)



## Standard Models

## Accessories

| Part number      | Max. Vacuum Level | Max. Vacuum Flow | Air Consumption | Silencer      |
|------------------|-------------------|------------------|-----------------|---------------|
| NVP00-60M-S04A00 | 20"Hg             | 0.5 SCFM         | 0.5 SCFM        | NST2 Silencer |
| NVP00-60H-S04A00 | 28"Hg             | 0.5 SCFM         | 0.8 SCFM        | NST2 Silencer |

## Option selector

NVP★00-60★-S★A★

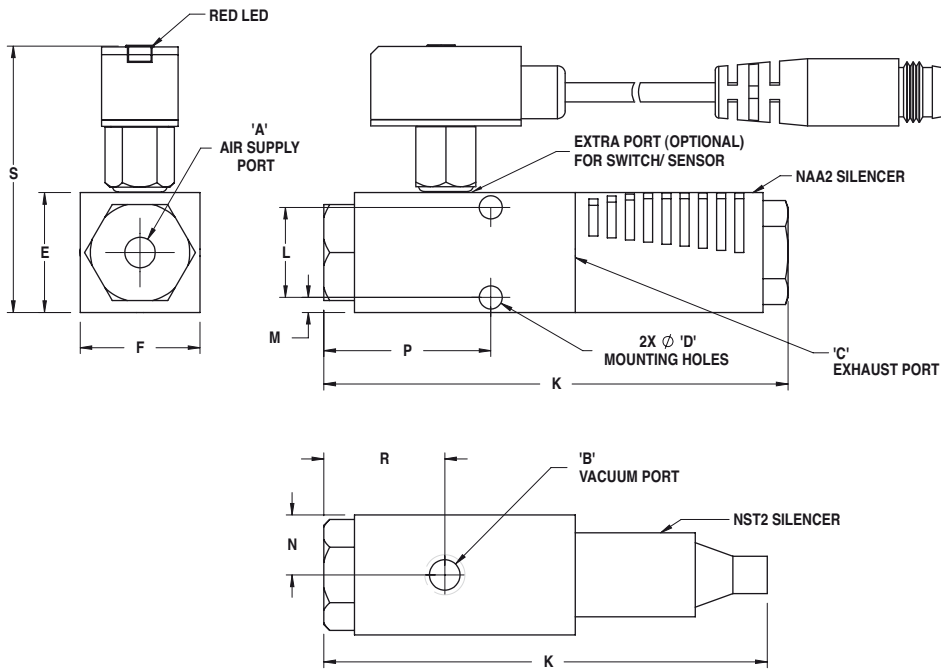
| Series                   | Substitute        | Accessories   | Substitute        |
|--------------------------|-------------------|---|-------------------|
| NVP (Imperial Thread)    |                   | Extra Port if Available / No Accessories (standard) | A00               |
| NVPM (Metric Thread)     | M                 | Extra Port if Available / NVTMV-QD-6                | A02               |
| <b>Vacuum Flow Level</b> | <b>Substitute</b> | Extra Port if Available / NVSMN-QD-6                | A04               |
| 20"Hg @ 80PSI (Standard) | M                 | Extra Port if Available / NVSMP-QD-6                | A06               |
| 28"Hg @ 80PSI (Standard) | H                 |   |                   |
| 20"Hg @ 60PSI            | Y                 | <b>Silencers</b>                                    | <b>Substitute</b> |
| 28"Hg @ 60PSI            | Z                 | None  | S00               |
|                          |                   | NAA2 (58dB)   | S01               |
|                          |                   | NST2 (68dB)   | S04               |

● Accessories

| Standard Models         | Silencer | Inline Fitting | Elbow Fitting | Vacuum Fitting | Bellows Cup | Flat Cup | Spring Leveler |
|-------------------------|----------|----------------|---------------|----------------|-------------|----------|----------------|
| <b>NVP00-60M-S04A00</b> | NST2     | 124250210      | 124470210     | NVCF1-1032M    | NVCD-***    | NVC-***  | NVSL1_***      |
| <b>NVP00-60H-S04A00</b> | NST2     | 124250210      | 124470210     | NVCF1-1032M    | NVCD-***    | NVC-***  | NVSL1_***      |

\*Proper selection of vacuum cups depends on the application. Cups are available in various durometers, colors and materials. If you do not see what you are looking for, please consult factory  
 \*The fittings, cups, and spring levelers listed are a small selection of possible options please refer to the specific catalog section

● Dimensions inches (mm)



| Model                    | Units    | A     | B     | C        | D      | E       | F       | K       | L       | M      | N      | P       | R       | S       |
|--------------------------|----------|-------|-------|----------|--------|---------|---------|---------|---------|--------|--------|---------|---------|---------|
| <b>NVP00-60*-S01A0*</b>  | Imperial | 10-32 | 10-32 | 1/8 NPTF | 0.12   | 0.62    | 0.62    | 2.42    | 0.47    | 0.08   | 0.31   | 0.89    | 0.63    | 1.36    |
| <b>NVP00-60*-S04A0*</b>  | Imperial | 10-32 | 10-32 | 1/8 NPTF | 0.12   | 0.62    | 0.62    | 2.35    | 0.47    | 0.08   | 0.31   | 0.89    | 0.63    | 1.36    |
| <b>NVPM00-60*-S01A0*</b> | (Metric) | (M5)  | (M5)  | (G 1/8)  | (3.00) | (15.75) | (15.75) | (61.47) | (11.94) | (2.03) | (7.87) | (22.60) | (16.00) | (34.53) |
| <b>NVPM00-60*-S04A0*</b> | (Metric) | (M5)  | (M5)  | (G 1/8)  | (3.00) | (15.75) | (15.75) | (59.69) | (11.94) | (2.03) | (7.87) | (22.60) | (16.00) | (34.53) |

# NVPOX

Pneumatic Blow-off

- All in one vacuum and blow-off - only compressed air required
- High Productivity – non-clogging design reduces downtime
- Strong hold – powerful vacuum up to 28"Hg [948mbar]
- Mounts Easily – compact and lightweight
- Fast Response – installs close to vacuum point
- Efficient – minimal air consumption
- Reliable operation – straight-through design with no moving parts

## Technical Data

**Fluid**  
Filtered (50 Micron) unlubricated, non-corrosive dry gases

**Operating Pressure**  
80 PSI (5.5 bar) Standard or 60 PSI (4.1 bar)

**Operating temperature**  
-30° to ~250° F (-34° to 121°C)

**Materials**  
Pump Body: Anodized Aluminum

**Pump options**  
B1 adjustable version allows the user to set the intensity of the blow-off from no blow-off to full blow-off

**Cycle rates**  
Up to 900/min

**Blow-off response time**  
Instantaneous

**Blow-off Duration**  
100 milliseconds (based on system design)

**Orientation**  
Any

**Supply line**  
Min. 5/32" (4mm)

**Vacuum line**  
1/4" (6mm)

**Mounting holes**  
Mounting holes accept 4-40 [M3] screws

**Control valve**  
3 way/2 position (faster part release), minimum orifice – 0.093" [2.5mm]

**Performance level designations**  
"M" 0-20"Hg [0 to 677mbar] for medium vacuum/high flow applications  
"H" 0-28"Hg [0 to 948mbar] for high vacuum/standard flow applications

**Product options**  
Standard (NVPO0)  
Pneumatic blow-off (NVPOX)



## Standard Models

## Accessories

| Part number      | Max. Vacuum Level | Max. Vacuum Flow | Air Consumption | Silencer      |
|------------------|-------------------|------------------|-----------------|---------------|
| NVPOX-60M-S04A00 | 20"Hg             | 0.5 SCFM         | 0.5 SCFM        | NST2 Silencer |
| NVPOX-60H-S04A00 | 28"Hg             | 0.5 SCFM         | 0.8 SCFM        | NST2 Silencer |

## Option selector

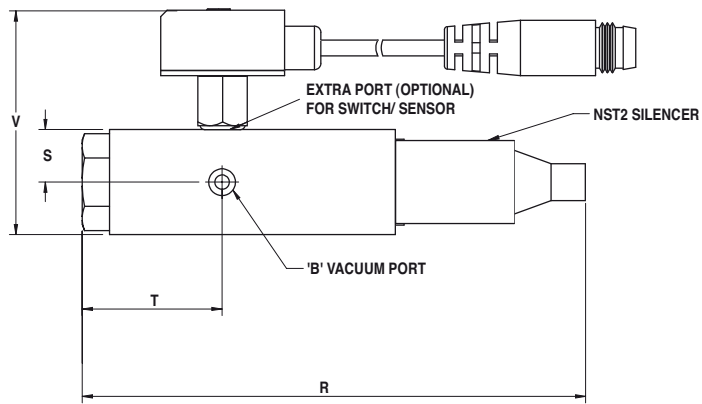
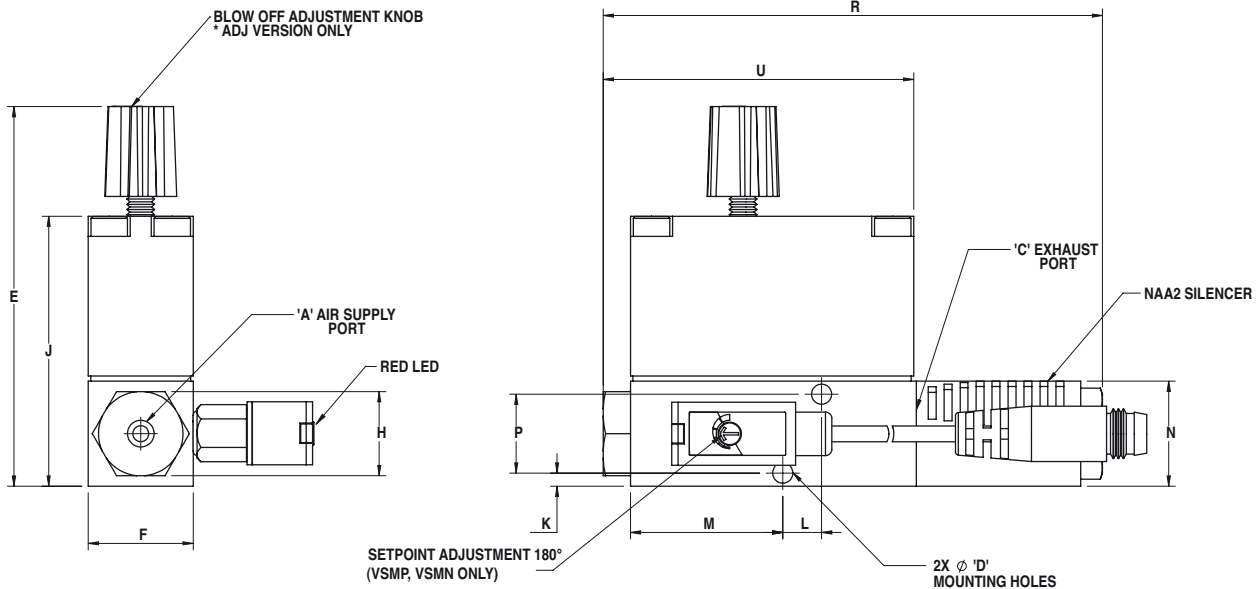
NVP★OX★★-60★-S★★A★★

| Series                    | Substitute        | Accessories   | Substitute        |
|---------------------------|-------------------|---|-------------------|
| NVP (Imperial Thread)     |                   | Extra Port if Available / No Accessories (standard) | A00               |
| NVPM (Metric Thread)      | M                 | Extra Port if Available / NVTMV-QD-6                | A02               |
| <b>Blowoff</b>            | <b>Substitute</b> | Extra Port if Available / NVSMN-QD-6                | A04               |
| Non-adjustable (Standard) | B0                | Extra Port if Available / NVSMP-QD-6                | A06               |
| Adjustable                | B1                |   |                   |
| <b>Vacuum Level</b>       | <b>Substitute</b> | <b>Silencers</b>                                    | <b>Substitute</b> |
| 20"Hg @ 80PSI (Standard)  | M                 | None  | S00               |
| 28"Hg @ 80PSI (Standard)  | H                 | NAA2 (58dB)   | S01               |
|                           |                   | NST2 (68dB)   | S04               |

# NVPOX

Pneumatic Blow-off

## ● Dimensions inches (mm)

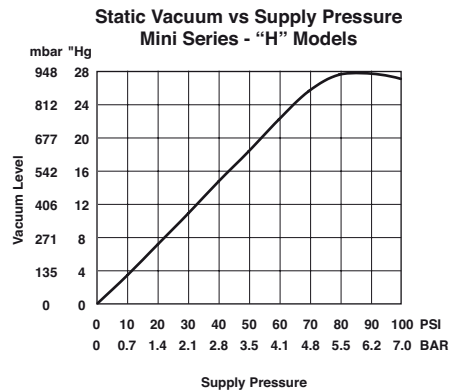
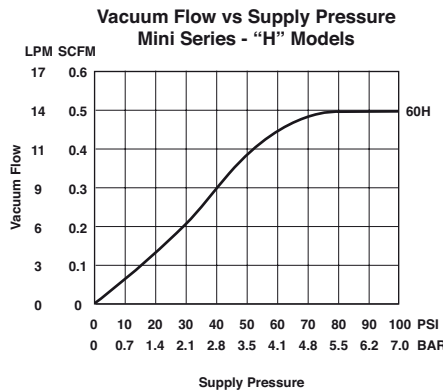
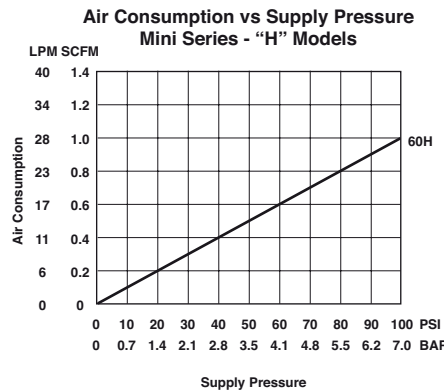
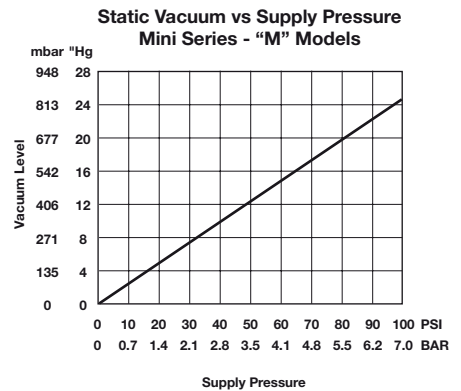
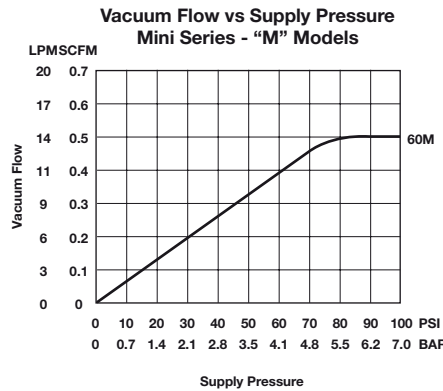
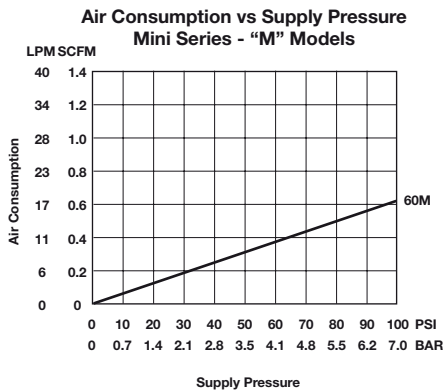


| Model               | Units    | A     | B     | C        | D      | E*      | F       | J       | K      | L      | M       | N       | P       | R       | S      | T       | U       | V       |
|---------------------|----------|-------|-------|----------|--------|---------|---------|---------|--------|--------|---------|---------|---------|---------|--------|---------|---------|---------|
| NVPOXB0-60*-S01A0*  | Imperial | 10-32 | 10-32 | 1/8 NPTF | 0.12   | 2.26    | 0.63    | 1.61    | 0.078  | 0.23   | 0.91    | 0.63    | 0.47    | 2.97    | 0.31   | 0.83    | 1.85    | 1.36    |
| NVPOXB0-60*-S04A0*  | Imperial | 10-32 | 10-32 | 1/8 NPTF | 0.12   | 2.26    | 0.63    | 1.61    | 0.078  | 0.23   | 0.91    | 0.63    | 0.47    | 2.90    | 0.31   | 0.83    | 1.85    | 1.36    |
| NVPMOXB0-60*-S01A0* | (Metric) | (M5)  | (M5)  | (G 1/8)  | (3.00) | (57.40) | (16.00) | (40.89) | (1.98) | (5.84) | (23.11) | (15.88) | (11.91) | (75.44) | (7.87) | (21.08) | (46.99) | (34.53) |
| NVPMOXB0-60*-S04A0* | (Metric) | (M5)  | (M5)  | (G 1/8)  | (3.00) | (57.40) | (16.00) | (40.89) | (1.98) | (5.84) | (23.11) | (15.88) | (11.91) | (73.66) | (7.87) | (21.08) | (46.99) | (34.53) |

● Performance Data

| Model | Air Consumption<br>SCFM (L/min) | Vacuum Level<br>"Hg (mbar)   | 0"Hg<br>(0)    | 3"Hg<br>(102)   | 6"Hg<br>(203)   | 9"Hg<br>(305)   | 12"Hg<br>(406)  | 15"Hg<br>(508)   | 18"Hg<br>(609)   | 20"Hg<br>(677) | 21"Hg<br>(711)   | 24"Hg<br>(813)   | 27"Hg<br>(914)    | 28"Hg<br>(948)    |
|-------|---------------------------------|------------------------------|----------------|-----------------|-----------------|-----------------|-----------------|------------------|------------------|----------------|------------------|------------------|-------------------|-------------------|
| 60M   | 0.50<br>(14.16)                 | Vacuum Flow                  | 0.50           | 0.40            | 0.30            | 0.22            | 0.15            | 0.08             | 0.03             | 0.00           | -                | -                | -                 | -                 |
|       |                                 | SCFM (L/min)                 | (14.20)        | (11.30)         | (8.50)          | (6.20)          | (4.20)          | (2.30)           | (0.80)           | (0.00)         | (-)              | (-)              | (-)               | (-)               |
|       |                                 | Evacuation time<br>(seconds) | 0.00<br>(0.00) | 12.50<br>(0.40) | 25.10<br>(0.90) | 43.90<br>(1.60) | 68.60<br>(2.40) | 99.30<br>(3.50)  | 153.70<br>(5.40) | 227<br>(8.00)  | (-)              | (-)              | (-)               | (-)               |
| 60H   | 0.80<br>(22.70)                 | Vacuum Flow                  | 0.50           | 0.38            | 0.32            | 0.30            | 0.27            | 0.23             | 0.20             | -              | 0.13             | 0.05             | 0.02              | 0.00              |
|       |                                 | SCFM (L/min)                 | (14.20)        | (10.80)         | (9.10)          | (8.50)          | (7.60)          | (6.50)           | (5.70)           | (-)            | (3.70)           | (1.40)           | (0.60)            | (0.00)            |
|       |                                 | Evacuation time<br>(seconds) | 0.00<br>(0.00) | 15.00<br>(0.50) | 29.80<br>(1.10) | 50.60<br>(1.80) | 74.50<br>(2.60) | 102.80<br>(3.60) | 135.90<br>(4.80) | (-)            | 182.20<br>(6.50) | 245.90<br>(8.70) | 410.20<br>(14.50) | 790.80<br>(27.90) |

Evacuation time in seconds based on 1 cubic foot volume / "Hg (1 Liter Volume / mbar)



Notes: Standard operating pressure for IMI Norgren pumps is 80 PSI [5.5 bar]. Pumps can be factory modified to run at other operating pressures i.e. 60 PSI [4.1 bar] etc. The values shown in the performance chart will remain the same for all operating pressures.

**Warnings**

Improper selection, misuse, age or malfunction of components used in systems can cause failure in various modes. The system designer is warned to consider the failure modes of all component parts and to provide adequate safeguards to prevent personal injury or damage to equipment or property in the event of such failure modes. System designers and end users are cautioned to consult instruction sheets and specifications available from the factory. The system designer/end user is responsible for verifying that all requirements for the application are met.

**Warranty**

The products described herein are warranted subject to seller's Standard Terms and Condition of Sale, available at seller's website.