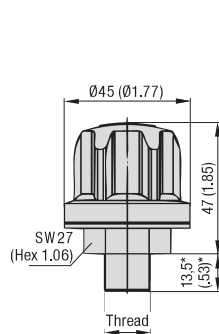


## Plastic Filler Breather

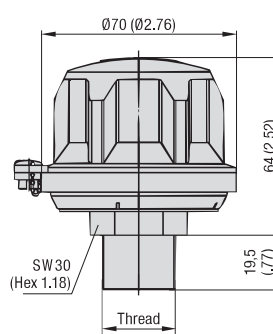
### Types SPB-1 / 2 / 3

#### (Threaded Version)

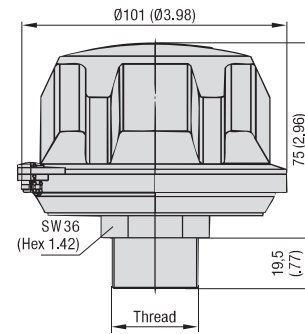
B


**SPB-1**

\* for thread type N12: 16,0 (.63)


**SPB-2**

(See page 28 for compact version SPBN)


**SPB-3**

## Characteristics

Designed to be used as filler ports for hydraulic reservoirs, allowing the reservoir to breathe whilst protecting it from contamination found in harsh environments

### Features

- Available with 3 different cap diameters
- Threaded version, equipped with male BSP thread (ISO 228) or male NPT thread (ANSI B1.20.1)
- Operating temperature range: -40 °C ... +120 °C / -40 °F ... +248 °F

### Materials

- Made of non-corrosive materials
- Body and cap made of glass-fibre reinforced Polyamide (PA)
- Sealings made of NBR (Buna-N®)

Contact STAUFF for alternative materials.

### Accessories / Options

- Pressurisation up to 0,7 bar / 10 PSI (not available for SPB-1)
- Air filter element
- Anti-splash feature
- Plastic dipstick with integrated anti-splash feature
- Plastic dipstick with integrated magnet
- Oil Demister (not available for SPB-1)

Please see pages 26 and 47 for details.

### Maximum Air Flow Rate

- 0,15 m³/min / 5,30 cfm for SPB-1
- 0,40 m³/min / 14,13 cfm for SPB-2
- 1,00 m³/min / 35,31 cfm for SPB-3

Please see page 27 for detailed air flow curves.

### Installation

- Recommended mounting spaces:  
Ø48 mm / Ø1.89 in for SPB-1,  
Ø90 mm / Ø3.54 in for SPB-2, and  
Ø122 mm / Ø4.80 in for SPB-3

## Thread Options

Thread	SPB-1	SPB-2	SPB-3	Code
Male BSP Thread (ISO 228)				
G1/4	●	○	○	B04
G3/8	●	●	○	B06
G1/2	●	●	●	B08
G3/4	○	●	●	B12
G1	○	○	●	B16

Thread	SPB-1	SPB-2	SPB-3	Code
Male NPT Thread (ANSI B1.20.1)				
1/4	●	○	○	N04
3/8	●	○	○	N06
1/2	●	○	○	N08
3/4	●	●	○	N12
1	○	○	●	N16

● Standard Option

## Order Codes

<b>SPB</b>	<b>-</b>	<b>2</b>	<b>-</b>	<b>O</b>	<b>-</b>	<b>10</b>	<b>-</b>	<b>B12</b>	<b>-</b>	<b>O</b>	<b>-</b>	<b>D200</b>
①		②		③		④		⑤		⑥		⑦

### ① Type

Plastic Filler Breather **SPB**

### ② Version

Threaded version; Cap diameter Ø45 mm (Ø1.77 in) **1**  
Threaded version; Cap diameter Ø70 mm (Ø2.76 in) **2**  
Threaded version; Cap diameter Ø101 mm (Ø3.98 in) **3**

### ③ Pressurisation

Without pressurisation (standard option) **0**  
Pressurised at 0,2 bar / 3 PSI **B0.2**  
Pressurised at 0,35 bar / 5 PSI **B0.35**  
Pressurised at 0,7 bar / 10 PSI **B0.7**

Type SPB-1 is only available without pressurisation.  
Please see page 26 for details.

### ④ Air Filter Element (Material / Micron Rating)

10 µm Foam / PUR (standard option) **10**  
40 µm Foam / PUR **40**  
3 µm Inorganic Glass-Fibre, pleated **E03**  
10 µm Filter Paper, pleated **L10**

Options E03 and L10 are only available for type SPB-3.  
Contact STAUFF for alternative materials / micron ratings.

### ⑤ Connection Thread (Male)

G1/4 (for SPB-1 only) **B04**  
G3/8 (for SPB-1 and 2 only) **B06**  
G1/2 (for SPB-1, 2 and 3) **B08**  
G3/4 (for SPB-2 and 3 only) **B12**  
G1 (for SPB-3 only) **B16**  
1/4 NPT (for SPB-1 only) **N04**  
3/8 NPT (for SPB-1 only) **N06**  
1/2 NPT (for SPB-1 only) **N08**  
3/4 NPT (for SPB-1, 2 and 3) **N12**  
1 NPT (for SPB-3 only) **N16**

### ⑥ Anti-Splash Feature

With anti-splash feature (standard option) **A**  
Without anti-splash feature **0**

The anti-splash feature for the SPB-1, can only be achieved in conjunction with a dipstick, but is not available for the SPB-1 with connection sizes B04 and N04. Please see page 26 for details.

### ⑦ Dipstick

Plastic dipstick (200 mm / 7.88 in) with integrated anti-splash feature **D200**  
Plastic dipstick (300 mm / 11.81 in) with integrated anti-splash feature **D300**  
Plastic dipstick (300 mm / 11.81 in) with integrated magnet **D300M**  
Without dipstick **-**

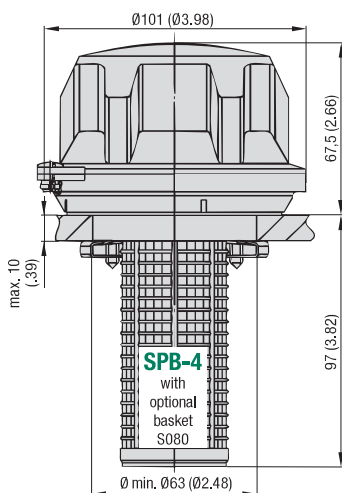
A shorter dipstick length can be achieved by simply cutting down the total length according to individual requirements. Please see page 26 for details.

Dimensional drawings: All dimensions in mm (in).

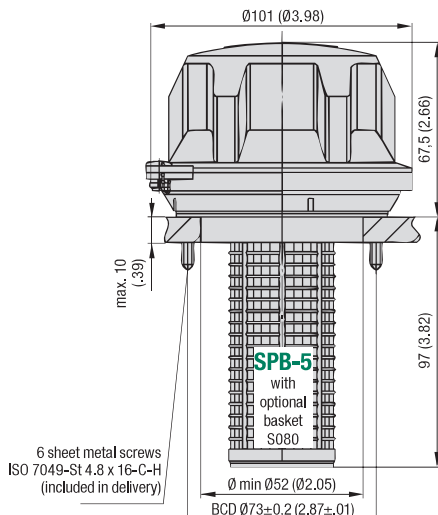


## Plastic Filler Breather Types SPB-4 / 5 (Flange Version)

B



Clamping jaw installation  
to a single mounting hole



Installation to a six-hole bolt pattern  
with flange interface similar to DIN 24557, Part 2



### Characteristics

Designed to be used as filler ports for hydraulic reservoirs, allowing the reservoir to breathe whilst protecting it from contamination found in harsh environments

### Features

- Cap diameter of Ø101 mm / Ø3.98 in
- Either for clamping installation (with 3 clamping jaws and cross-drive screws) or with a six-hole bolt pattern
- Operating temperature range:  
-40 °C ... +120 °C / -40 °F ... +248 °F

### Materials

- Made of non-corrosive materials
- Body and cap made of glass-fibre reinforced Polyamide (PA)
- Sealings made of NBR (Buna-N®)

Contact STAUFF for alternative materials.

### Accessories / Options

- Plastic basket (800 µm)
- Pressurisation up to 0,7 bar / 10 PSI
- Air filter element
- Anti-splash feature
- Plastic dipstick with integrated anti-splash feature
- Plastic dipstick with integrated magnet

Please see page 26 for details.

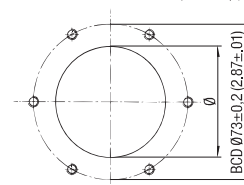
### Maximum Air Flow Rate

- 1,00 m³/min / 35,31 cfm for SPB-4 / 5

Please see page 27 for detailed air flow curves.

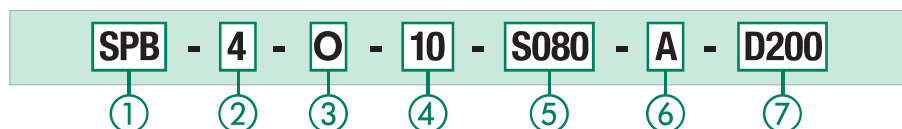
### Installation

- Recommended mounting space: Ø122 mm / Ø4.80 in
- Six-hole bolt pattern for flange interfaces similar to DIN 24557, part 2 (type SPB-5):



- 6 sheet metal screws (ISO 7049-St 4.8 x 16-C-H) are included in delivery (type SPB-5); can be replaced by regular M5 socket cap screws (ISO 4762), if required
- Recommended diameters of the screw holes, depending on the sheet thickness of the reservoir (type SPB-5):  
Ø4,0 mm / Ø.16 in at a thickness of 1,20 mm / .05 in,  
Ø4,1 mm / Ø.16 in at a thickness of 2,00 mm / .08 in,  
Ø4,3 mm / Ø.17 in at a thickness of 4,00 mm / .16 in, and  
Ø4,4 mm / Ø.17 in at a thickness of 5,00 mm / .20 in

### Order Codes



#### ① Type

Plastic Filler Breather **SPB**

#### ② Version

Bayonet version for clamping jaw installation to a single mounting hole; Cap diameter Ø101 mm (Ø3.98 in) **4**  
Bayonet Version with six-hole bolt pattern for flange interfaces similar to DIN 24557, part 2; Cap diameter Ø101 mm (Ø3.98 in) **5**

#### ③ Pressurisation

Without pressurisation (standard option) **0**  
Pressurised at 0,2 bar / 3 PSI **B0.2**  
Pressurised at 0,35 bar / 5 PSI **B0.35**  
Pressurised at 0,7 bar / 10 PSI **B0.7**

Please see page 26 for details.

#### ④ Air Filter Element (Material / Micron Rating)

10 µm Foam / PUR (standard option) **10**  
40 µm Foam / PUR **40**  
3 µm Inorganic Glass-Fibre, pleated **E03**  
10 µm Filter Paper, pleated **L10**

Contact STAUFF for alternative materials / micron ratings.

#### ⑤ Basket Option

Plastic basket (105 mm / 4.13 in) **S080**  
Telescopic plastic basket **S200**  
(max. 205 mm / max. 8.07 in)  
Plastic basket with flange interface similar to DIN 24557, part 2 **S095P**  
(95 mm / 3.74 in)  
Without basket **X**

Option S095P is only available for type SPB-5.  
Please see page 26 for details.

#### ⑥ Anti-Splash Feature

With anti-splash feature (standard option) **A**  
Without anti-splash feature **0**

#### ⑦ Dipstick

Plastic dipstick (200 mm / 7.88 in) with integrated anti-splash feature **D200**  
Plastic dipstick (300 mm / 11.81 in) with integrated anti-splash feature **D300**  
Plastic dipstick (300 mm / 11.81 in) with integrated magnet **D300M**  
Without dipstick **-**

A shorter dipstick length can be achieved by simply cutting down the total length according to individual requirements. When choosing a combination of a basket and a dipstick, the dipstick has to be at least 15 mm / .59 in shorter than the basket.  
Please see page 26 for details.

