



Clamp Body
Profiled Inside Surface with Tension Clearance

54



Clamp Body
Smooth Inside Surface without Tension Clearance

54



Single Weld Plate

SP

55



Group Weld Plate

RAP

55



Hexagon Rail Nut

SM / SMG

56



Mounting Rail

TS

56



Channel Rail Adaptor

CRA

57



Cover Plate

GD

58



Hexagon Head Bolt

AS

58



Socket Cap Screw

IS

59



Safety Locking Plate

SI

60



Safety Locking Plate

SIV

60



Stacking Bolt

AF

61

Clamp Assemblies

62

C

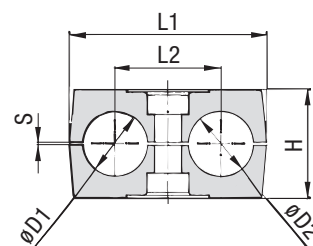
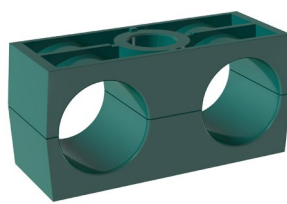
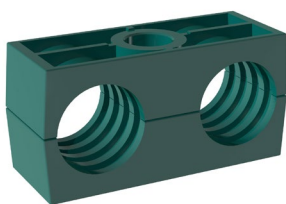


Clamp Body ▪ Profiled Design

Profiled Inside Surface with Tension Clearance

Clamp Body ▪ Type H

Smooth Inside Surface w/o Tension Clearance



Ordering Codes

Clamp Body

***1*06/06*-PP**

One clamp body is consisting of two clamp halves.

- * 1st Part of STAUFF Group
- * Exact outside diameters Ø D1 / Ø D2 (mm)
- * Material code (see below)

1
06/06
PP

Designs & Standard Materials

**Polypropylene ▪ Profiled Design**

Profiled inside surface with tension clearance

Colour: Green

Material code: **PP****Polypropylene ▪ Profiled Design**

Profiled inside surface with tension clearance

Colour: Black

Material code: **PP-BK****Polypropylene ▪ Type H**

Smooth inside surface without tension clearance

Colour: Green

Material code: **PP-H****Polypropylene ▪ Type H**

Smooth inside surface without tension clearance

Colour: Black

Material code: **PP-H-BK****Polyamide ▪ Profiled Design**

Profiled inside surface with tension clearance

Colour: Black

Material code: **PA****Polyamide ▪ Type H**

Smooth inside surface without tension clearance

Colour: Black

Material code: **PA-H**

See pages 154 / 155 for properties and technical information.

Special Materials

Please contact STAUFF for further details on fire-proof clamp body materials, tested and approved according to several international fire-protection standards (such as BS 6853, EN 45545-2, UL 94 and many more).

See pages 156 / 157 for material properties and technical information.

Product Features

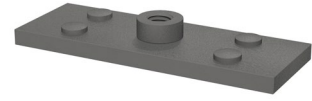
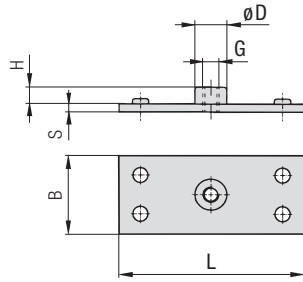
- Proven, tested and trusted product in various markets
- Profiled design recommended for the safe installation of rigid pipes and tubes; type H recommended for the safe installation of hoses and cables
- Available for all commonly used pipe and tube outside diameters
- Environmental protection due to vibration/noise reducing design
- Excellent weathering resistance, even under extreme conditions

Group	STAUFF	DIN	Outside Diameter Pipe / Tube / Hose Ø D1 / Ø D2 (mm) (in)		Nominal Bore Copper Tube ASTM B88 Pipe (in)	Ordering Codes (2 Clamp Halves) (**-* = Material)	Dimensions (mm / in)					
							L1	L2	H	S min.	Type H	Width
1D	1	1	6			106/06-**-*						
			6,4	1/4		106.4/06.4-**-*						
			8	5/16		108/08-**-*	36	20	27	0,6	26,5	30
			9,5	3/8	1/4	109.5/09.5-**-*	1.42	.79	1.06	.02	1.04	1.18
			10		1/8	110/10-**-*						
			12			112/12-**-*						
2D	2	2	12,7	1/2	3/8	212.7/12.7-**-*						
			13,5		1/4	213.5/13.5-**-*						
			14			214/14-**-*						
			15			215/15-**-*	53	29	27	0,7	26	30
			16	5/8	1/2	216/16-**-*	2.09	1.14	1.06	.03	1.02	1.18
			17,2		3/8	217.2/17.2-**-*						
3D	3	3	18			218/18-**-*						
			19	3/4		319/19-**-*						
			20			320/20-**-*						
			21,3		1/2	321.3/21.3-**-*	67	36	37	0,7	36,5	30
			22	7/8	3/4	322/22-**-*	2.64	1.42	1.46	.03	1.44	1.18
			25			325/25-**-*						
4D	4	4	25,4	1		325.4/25.4-**-*						
			26,9		3/4	426.9/26.9-**-*						
			28			428/28-**-*	80	45	40	0,7	38	30
			30			430/30-**-*	3.15	1.77	1.57	.03	1.46	1.18
5D	5	5	32	1-1/4		532/32-**-*						
			33,7		1	533.7/33.7-**-*						
			35		1-1/4	535/35-**-*	106	56	53	0,7	52	30
			38	1-1/2		538/38-**-*	4.17	2.20	2.09	.03	2.04	1.18
			40			540/40-**-*						
			42		1-1/4	542/42-**-*						

Additional outside diameters and combinations of different outside diameters are available upon request.
Please contact STAUFF for further information.



Single Weld Plate Type SP



Group STAUFF	DIN	Dimensions ^(mm/in)						Ordering Codes (Standard Options)
		L	B	S	H	ØD	Thread G	
1D	1	37	30	3	6,5	12	M6	SP-1D-M-W2
		1.46	1.18	.12	.26	.47	1/4-20 UNC	SP-1D-U-W2
2D	2	55	30	5	6	14	M8	SP-2D-M-W2
		2.17	1.18	.20	.24	.55	5/16-18 UNC	SP-2D-U-W2
3D	3	70	30	5	6	14	M8	SP-3D-M-W2
		2.76	1.18	.20	.24	.55	5/16-18 UNC	SP-3D-U-W2
4D	4	85	30	5	6	14	M8	SP-4D-M-W2
		3.35	1.18	.20	.24	.55	5/16-18 UNC	SP-4D-U-W2
5D	5	110	30	5	6	14	M8	SP-5D-M-W2
		4.33	1.18	.20	.24	.55	5/16-18 UNC	SP-5D-U-W2

All threaded parts are available with Metric ISO thread or unified coarse (UNC) thread according to dimension table.
Alternative materials and surface finishings are available upon request. Contact STAUFF for further information.

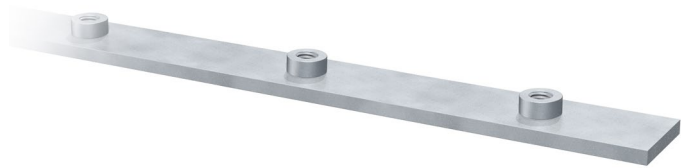
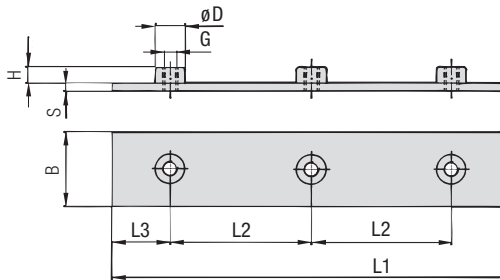
Ordering Codes

Weld Plate

***SP-*1D-*M-*W2**

* Single Weld Plate		SP
* STAUFF Group		1D
* Thread code	Metric ISO thread	M
	Unified coarse (UNC) thread	U
* Material code	Carbon Steel, phosphated	W2
	Carbon Steel, zinc/nickel-plated	W3
	Stainless Steel V2A	W4
	1.4301 / 1.4305 (AISI 304 / 303)	W4
	Stainless Steel V4A	W5
	1.4401 / 1.4571 (AISI 316 / 316 Ti)	W5

Group Weld Plate for 5 Clamp Bodies Type RAP



Group STAUFF	DIN	Dimensions (mm/in)								Ordering Codes (Standard Options)
L1	L2	L3	B	S	H	ØD	Thread G			
1D	1	196	40	18	30	3	6,5	12	M6	RAP-1D-40-5-M-W1
		7.72	1.57	.71	1.18	.12	.26	.47	1/4-20 UNC	RAP-1D-40-5-U-W1
2D	2	288	58	28	30	5	6	14	M8	RAP-2D-58-5-M-W1
		11.34	2.28	1.10	1.18	.20	.24	.55	5/16-18 UNC	RAP-2D-58-5-U-W1
3D	3	358	72	35	30	5	6	14	M8	RAP-3D-72-5-M-W1
		14.09	2.83	1.37	1.18	.20	.24	.55	5/16-18 UNC	RAP-3D-72-5-U-W1
4D	4	444	90	42	30	5	6	14	M8	RAP-4D-90-5-M-W1
		17.48	3.54	1.65	1.18	.20	.24	.55	5/16-18 UNC	RAP-4D-90-5-U-W1
5D	5	558	112	55	30	5	6	14	M8	RAP-5D-112-5-M-W1
		21.97	4.41	2.16	1.18	.20	.24	.55	5/16-18 UNC	RAP-5D-112-5-U-W1

All threaded parts are available with Metric ISO thread or unified coarse (UNC) thread according to dimension table.
Alternative materials and surface finishings are available upon request. Contact STAUFF for further information.

Ordering Codes

Weld Plate

***RAP-*1D-*40-*5-*M-*W1**

* Group Weld Plate		RAP
* STAUFF Group		1D
* Pipe Center Spacing L2 (mm)		40
* Number of Clamps		5
* Thread code	Metric ISO thread	M
	Unified coarse (UNC) thread	U
* Material code	Carbon Steel, uncoated	W1
	Carbon Steel, phosphated	W2
	Carbon Steel, zinc/nickel-plated	W3
	Stainless Steel V2A	W4
	1.4301 / 1.4305 (AISI 304 / 303)	W4
	Stainless Steel V4A	W5
	1.4401 / 1.4571 (AISI 316 / 316 Ti)	W5



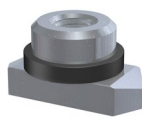
Hexagon Rail Nut

(for Use with Mounting Rail TS)

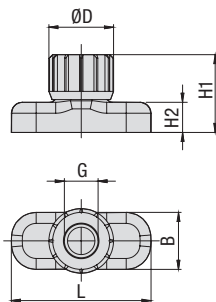
Type SM / SMG



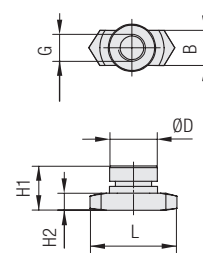
STAUFF Group 1D



STAUFF Group 2D to 5D



STAUFF Group 1D



STAUFF Group 2D to 5D

Ordering Codes

Hexagon Rail Nut *SM-*1-8/1D-*M-*W3

* Hexagon Rail Nut

Carbon Steel **SM**
Stainless Steel **SMG**

* STAUFF Group 1D (DIN Group 1) **1-8/1D**
2D to 5D (DIN Group 2 to 5) **2-5D**

* Thread code Metric ISO thread **M**
Unified coarse (UNC) thread **U**

* Material code Carbon Steel, zinc/nickel-plated **W3**
Stainless Steel V2A **W4**
1.4301 / 1.4305 (AISI 304 / 303)
Stainless Steel V4A **W5**
1.4401 / 1.4571 (AISI 316 / 316 Ti)

Group STAUFF	DIN	Dimensions (mm/in) Thread G	L	B	H1	H2	ØD	Ordering Codes (Standard Options)
1D	1	M6	25,5	10,4	14,2	5,5	12	SM-1-8/1D-M-W3
		1/4-20 UNC	1.00	.41	.56	.22	.47	SM-1-8/1D-U-W3
2D	2							
3D	3							
4D	4	M8	25,5	10,4	13	5	14	SM-2-5D-M-W3
		5/16-18 UNC	1.00	.41	.51	.20	.55	SM-2-5D-U-W3
5D	5							

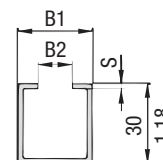
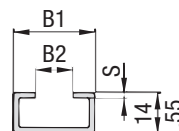
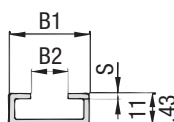
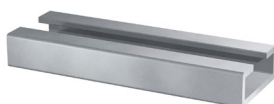
The Hexagon Rail Nut, type SM-1-8/1D is also suitable for Standard Series, STAUFF Group 1 to 8.

All threaded parts are available with Metric ISO thread or unified coarse (UNC) thread according to dimension table. Alternative materials and surface finishings are available upon request. Contact STAUFF for further information.

Mounting Rail

(for Use with Hexagon Rail Nut SM / SMG)

Type TS



Mounting Rail TS-11

Mounting Rail TS-14

Mounting Rail TS-30

Ordering Codes

Mounting Rail *TS-*11-*1M-*W1

* Mounting Rail **TS**

* Height of rail 11 mm / .43 in **11**
14 mm / .55 in **14**
30 mm / 1.18 in **30**

* Length of rail 1 m / 3.28 ft **1M**
2 m / 6.56 ft **2M**

Alternative lengths available upon request.
Contact STAUFF for further information.

* Material code Carbon Steel, uncoated **W1**
Carbon Steel, hot-dip galvanised **W98**
Stainless Steel V2A **W4**
1.4301 / 1.4305 (AISI 304 / 303)
Stainless Steel V4A **W5**
1.4401 / 1.4571 (AISI 316 / 316 Ti)

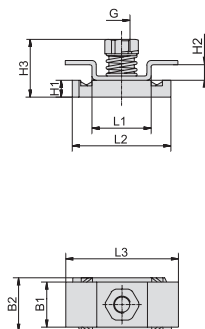
Group STAUFF	DIN	Dimensions (mm/in) B1	B2	S	Ordering Codes (Standard Options) Length of Rail: 1 m / 3.28 ft	Length of Rail: 2 m / 6.56 ft
1D	1				Height 11 mm / .43 in TS-11-1M-W1	Height 11 mm / .43 in TS-11-2M-W1
2D	2					
3D	3	28 1.10	11 .43	2 .08	Height 14 mm / .55 in TS-14-1M-W1	Height 14 mm / .55 in TS-14-2M-W1
4D	4					
5D	5				Height 30 mm / 1.18 in TS-30-1M-W1	Height 30 mm / 1.18 in TS-30-2M-W1

Mounting Rails, type TS-11/14/30 are suitable for all Twin Series and Standard Series group sizes.

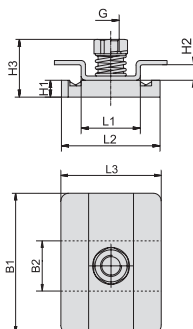
Alternative materials and surface finishings are available upon request. Contact STAUFF for further information.

Dimensional drawings: All dimensions in mm (in).



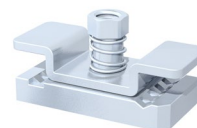


STAUFF Group 1D



STAUFF Group 2-3D / 4-5D

Channel Rail Adaptor (for Use with Various Channel Rails) Type CRA



Group STAUFF	DIN	Dimensions (mm/in) Thread G	L1	L2	L3	B1	B2	H1	H2	H3	Ordering Codes (Standard Options)
1D	1	M6	21	35	40	16	19	6	5,5	20,5	CRA-1-8/1D-M-W3
		1/4-20 UNC	.83	1.38	1.57	.63	.75	.24	.22	.81	CRA-1-8/1D-U-W3
2D	2	M8	21	35	38	53	19	9	5,5	23,5	CRA-2-3D-M-W3
		5/16-18 UNC	.83	1.38	1.50	2.09	.75	.35	.22	.93	CRA-2-3D-U-W3
3D	3										
4D	4	M8	21	35	38	80	19	9	5,5	23,5	CRA-4-5D-M-W3
		5/16-18 UNC	.83	1.38	1.50	3.15	.75	.3	.22	.93	CRA-4-5D-U-W3
5D	5										

Ordering Codes

Adaptor *CRA-*1-8/1D-*M-*W3

* Channel Rail Adaptor	CRA
* STAUFF Group	1D (DIN Group 1) 1-8/1D 2D to 3D (DIN Group 2 to 3) 2-3D 4D to 5D (DIN Group 4 to 5) 4-5D
* Thread code	Metric ISO thread M Unified coarse (UNC) thread U
* Material code	Carbon Steel, zinc/nickel-plated W3 Stainless Steel V4A 1.4401 / 1.4571 (AISI 316 / 316 Ti) W5

The Channel Rail Adaptor, type CRA 1-8/1D is also suitable for Standard Series, STAUFF Group 1 to 8.

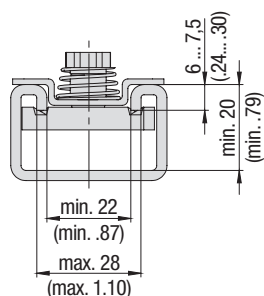
All threaded parts are available with Metric ISO thread or unified coarse (UNC) thread according to dimension table.
Alternative materials and surface finishings are available upon request. Contact STAUFF for further information.

Compatibility with Channel Rails

The STAUFF Channel Rail Adaptor, type CRA, is suitable for various channel rails, including the following types:

HALFEN	HILTI	UNISTRUT®	STAUFF (Cushion Clamp Series)
HM 41/41	MQ-21, MQ-41, MQ-52, MQ-72	P1000, P1000T, P1000V, P1000VT, P1001	SCS-048-1-PL, SCS-048-1-GR
HZA 41/22	MQ-21U, MQ-41U, MQ-72U	P2000, P2000T	SCS-120-1-PL, SCS-120-1-GR
HZM 41/41	MQ-21D, MQ-41D, MQ-52-72D	P3003, P3003T, P3300V, P3300VT, P3301	See page 149 for technical information.
HZM 41/22		P4000, P4000T	
HL 41/41, HL 41/B2		P5000, P5000T, P5001, P5500, P5500T, P5501	

Contact STAUFF to check compatibility with additional types of channel rails.

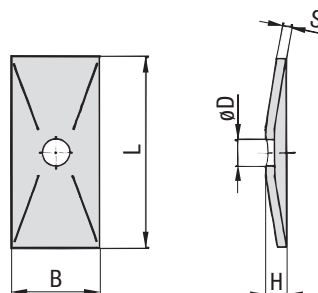
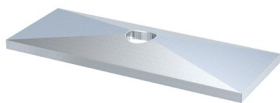


Basic dimensional requirements for channel rails to be used with
STAUFF Channel Rail Adaptors, type CRA

Dimensional drawings: All dimensions in mm (in).



Cover Plate Type GD



Ordering Codes

Cover Plate

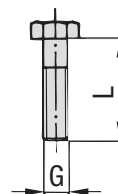
***GD-*1D-*W3**

* Cover Plate	GD
* STAUFF Group	1D
* Material code	Carbon Steel, zinc/nickel-plated W3
	Stainless Steel V2A W4
	1.4301 / 1.4305 (AISI 304 / 303)
	Stainless Steel V4A W5
	1.4401 / 1.4571 (AISI 316 / 316 Ti)

Group STAUFF	DIN	Dimensions (mm/in)					Ordering Codes (Standard Options)
		L	B	H	S	ØD	
1D	1	34	30	7	3	7	GD-1D-W3
		1.34	1.18	.28	.12	.28	
2D	2	52	30	7	3	9	GD-2D-W3
		2.05	1.18	.28	.12	.35	
3D	3	65	30	7	3	9	GD-3D-W3
		2.56	1.18	.28	.12	.35	
4D	4	79	30	7	3	9	GD-4D-W3
		3.11	1.18	.28	.12	.35	
5D	5	102	30	7	3	9	GD-5D-W3
		4.02	1.18	.28	.12	.35	

Alternative materials and surface finishings are available upon request. Contact STAUFF for further information.

Hexagon Head Bolt Type AS



Hexagon Head Bolt AS

(according to DIN 931 / 933 or ANSI / ASME B18.2.1.)

Dimensions applicable only when used with Cover Plate GD

Ordering Codes

Hexagon Head Bolt *AS-*M8x35-*W3

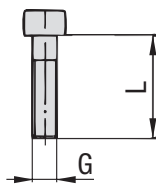
* Type of bolt	Hexagon Head Bolt (according to DIN 931 / 933 or ANSI / ASME B18.2.1.)	AS
* Thread type and size acc. to dimension table		M8x35
* Material code	Carbon Steel, zinc/nickel-plated	W3
	Stainless Steel V2A	W4
	1.4301 / 1.4305 (AISI 304 / 303)	
	Stainless Steel V4A	W5
	1.4401 / 1.4571 (AISI 316 / 316 Ti)	

Group STAUFF	DIN	Dimensions (mm/in) Thread G x L	Ordering Codes (Standard Options)
1D	1	M6 x 35	AS-M6x35-W3
		1/4-20 UNC x 1-3/8	AS-1/4-20UNCx1-3/8-W3
2D	2	M8 x 35	AS-M8x35-W3
		5/16-18 UNC x 1-3/8	AS-5/16-18UNCx1-3/8-W3
3D	3	M8 x 45	AS-M8x45-W3
		5/16-18 UNC x 1-3/4	AS-5/16-18UNCx1-3/4-W3
4D	4	M8 x 50	AS-M8x50-W3
		5/16-18 UNC x 2	AS-5/16-18UNCx2-W3
5D	5	M8 x 60	AS-M8x60-W3
		5/16-18 UNC x 2-1/2	AS-5/16-18UNCx2-1/2-W3

All threaded parts are available with Metric ISO thread or unified coarse (UNC) thread according to dimension table. Alternative materials and surface finishings are available upon request. Contact STAUFF for further information.



Socket Cap Screw Type IS



Socket Cap Screw IS
(according to ISO 4762 or ANSI / ASME B18.3)
Dimensions applicable only when used with Cover Plate GD



Group STAUFF	DIN	Dimensions (mm/in) Thread G x L	Ordering Codes (Standard Options)
1D	1	M6 x 35	IS-M6x35-W3
		1/4-20 UNC x 1-3/8	IS-1/4-20UNCx1-3/8-W3
2D	2	M8 x 35	IS-M8x35-W3
		5/16-18 UNC x 1-3/8	IS-5/16-18UNCx1-3/8-W3
3D	3	M8 x 45	IS-M8x45-W3
		5/16-18 UNC x 1-3/4	IS-5/16-18UNCx1-3/4-W3
4D	4	M8 x 50	IS-M8x50-W3
		5/16-18 UNC x 2	IS-5/16-18UNCx2-W3
5D	5	M8 x 60	IS-M8x60-W3
		5/16-18 UNC x 2-1/2	IS-5/16-18UNCx2-1/2-W3

Ordering Codes

Hexagon Head Bolt ***IS-*M8x35-*W3**

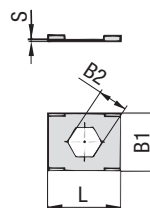
* Type of bolt	Socket Cap Screw (according to ISO 4762 or ANSI / ASME B18.3)	IS
* Thread type and size acc. to dimension table	M8x35	
* Material code	Carbon Steel, zinc/nickel-plated Stainless Steel V2A 1.4301 / 1.4305 (AISI 304 / 303) Stainless Steel V4A 1.4401 / 1.4571 (AISI 316 / 316 Ti)	W3 W4 W5

All threaded parts are available with Metric ISO thread or unified coarse (UNC) thread according to dimension table.
Alternative materials and surface finishings are available upon request. Contact STAUFF for further information.



Safety Locking Plate

Type SI (for Use with Stacking Bolt AF)



Safety Locking Plate SI
(Prevents Stacking Bolt from Loosening)

Ordering Codes

Safety Locking Plate ***SI-*1D-*W3**

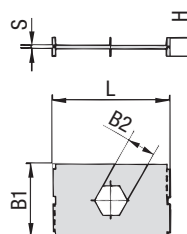
* Safety Locking Plate	SI
* STAUFF Group 1D (DIN Group 1)	1D
2D to 5D (DIN Group 2 to 5)	2-5D
* Material code Carbon Steel, zinc/nickel-plated	W3
Stainless Steel V2A	W4
1.4301 / 1.4305 (AISI 304 / 303)	
Stainless Steel V4A	W5
1.4401 / 1.4571 (AISI 316 / 316 Ti)	

Group STAUFF	DIN	Dimensions ^(mm/in)				Ordering Codes (Standard Options)
		L	B1	B2	S	
1D	1	27	22	11,2	0,5	SI-1D-W3
		1.06	.86	.44	.02	
2D	2	27	22	12,2	0,5	SI-2-5D-W3
3D	3					
4D	4					
5D	5					
		1.06	.86	.48	.02	

Alternative materials and surface finishings are available upon request. Contact STAUFF for further information.

Safety Locking Plate

Type SIV (for Use with Stacking Bolt AF)



Safety Locking Plate SIV
(Prevents Stacking Bolt from Loosening and Upper Clamp from Turning)

Ordering Codes

Safety Locking Plate ***SIV-*1D-*W3**

* Safety Locking Plate	SIV
* STAUFF Group 1D (DIN Group 1)	1D
2D to 3D (DIN Group 2 to 3)	2-3D
* Material code Carbon Steel, zinc/nickel-plated	W3
Stainless Steel V4A	W5
1.4401 / 1.4571 (AISI 316 / 316 Ti)	

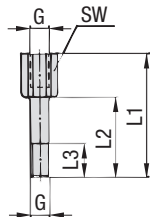
Group STAUFF	DIN	Dimensions ^(mm/in)					Ordering Codes (Standard Options)
		L	B1	B2	S	H	
1D	1	27	28	11,1	1	7	SIV-1D-W3
		1.06	1.10	.44	.04	.27	
2D	2						SIV-2-3D-W3
3D	3	45	28	12,1	1	7	
		1.77	1.10	.48	.04	.27	

Alternative materials and surface finishings are available upon request. Contact STAUFF for further information.



Stacking Bolt

(for Use with Safety Locking Plates SI / SIV) Type AF



C

Group	Dimensions (mm/in)						
STAUFF	DIN	Thread G	L1	L2	L3 min.	Hex	Ordering Codes (Standard Options)
1D	1	M6	34	20	12	11	AF-1D-M-W3
		1/4-20 UNC	1.33	.78	.47	.43	AF-1D-U-W3
2D	2	M8	33	20	12	12	AF-2D-M-W3
		5/16-18 UNC	1.30	.78	.47	.47	AF-2D-U-W3
3D	3	M8	44	29	12	12	AF-3D-M-W3
		5/16-18 UNC	1.73	1.14	.47	.47	AF-3D-U-W3
4D	4	M8	49	34	12	12	AF-4D-M-W3
		5/16-18 UNC	1.92	1.33	.47	.47	AF-4D-U-W3
5D	5	M8	61	46	12	12	AF-5D-M-W3
		5/16-18 UNC	2.40	1.81	.47	.47	AF-5D-U-W3

Ordering Codes

Stacking Bolt

***AF-*1D-*M-*W3**

* Stacking Bolt		AF
* STAUFF Group		1D
* Thread code	Metric ISO thread	M
	Unified coarse (UNC) thread	U
* Material code	Carbon Steel, zinc/nickel-plated	W3
	Stainless Steel V2A	W4
	1.4301 / 1.4305 (AISI 304 / 303)	
	Stainless Steel V4A	W5
	1.4401 / 1.4571 (AISI 316 / 316 Ti)	

All threaded parts are available with Metric ISO thread or unified coarse (UNC) thread according to dimension table. Alternative materials and surface finishings are available upon request. Contact STAUFF for further information.





Please see page 63 with detailed order examples for some of the most popular Twin Series clamp assemblies.

C

① Type of Installation

Please select the type of installation (e.g. weld plates, rail nuts, etc.) and add the corresponding **Code** to position ① of the order code for your clamp assembly.



Without Installation Equipment

Code: **none**

Installation on Weld Plate



Single Weld Plate

Code: **SP**



Group Weld Plate

Code: **RAP**

Installation on Mounting / Channel Rail



Mounting Rail Nut

Code: **SM** (Carbon Steel)
Code: **SMG** (Stainless Steel)



Channel Rail Adaptor

Code: **CRA**

② Group Size & Diameters

Please select the required group size and diameter and add the corresponding **Code** to position ② of the order code for your clamp assembly.

Group STAUFF (DIN)	Outside Diameter P / T / H (mm)	Availability of Clamp Body Materials & Designs		Code
		Profiled Design	Type H	
1D (1)	6	●	●	106/06
	6,4	●	●	106.4/06.4
	8	●	●	108/08
	9,5	●	●	109.5/09.5
	10	●	●	110/10
2D (2)	12	●	●	112/12
	12,7	●	●	212.7/12.7
	13,5	●	●	213.5/13.5
	14	●	●	214/14
	15	●	●	215/15
	16	●	●	216/16
	17,2	●	●	217.2/17.2
3D (3)	18	●	●	218/18
	19	●	●	319/19
	20	●	●	320/20
	21,3	●	●	321.3/21.3
	22	●	●	322/22
4D (4)	25	●	●	325/25
	25,4	●	●	325.4/25.4
	26,9	●	●	426.9/26.9
	28	●	●	428/28
5D (5)	30	●	●	430/30
	32	●	●	532/32
	33,7	●	●	533.7/33.7
	35	●	●	535/35
	38	●	●	538/38
	40	●	●	540/40
	42	●	●	542/42

● Standard Option

③ Clamp Body Design & Material

Please select the design and material of your clamp body and add the corresponding **Code** to position ③ of the order code for your clamp assembly.

Please check the availability of the selected clamp body design and material according to the matrix table in ②.

Profiled Design



Polypropylene

Code: **PP**



Polypropylene (Colour: Black)

Code: **PP-BK**



Polyamide

Code: **PA**

Type H (Smooth)



Polypropylene

Code: **PP-H**



Polypropylene (Colour: Black)

Code: **PP-H-BK**



Polyamide

Code: **PA-H**

See pages 154 / 155 for material properties and technical information.

Please contact STAUFF for further details on fire-proof clamp body materials, tested and approved according to several international fire-protection standards.

④ Mounting & Fitting Combination

Please select the mounting and fitting combination (e.g. Bolts, Cover Plates, etc.) and add the corresponding **Code** to position ④ of the order code for your clamp assembly.

Installation with Cover Plate and Bolt

Cover Plate GD with Hexagon Head Bolt AS

Code: **GD-AS**

Cover Plate GD with Socket Cap Screw IS

Code: **GD-IS**

Installation with Locking Plate and Bolt

Safety Locking Plate SI with Stacking Bolt AF

Code: **SI-AF**

Safety Locking Plate SIV with Stacking Bolt AF

Code: **SIV-AF** (for STAUFF Group 1D to 3D only)

⑤ Thread Type

Please select the required thread type and add the corresponding **Code** to position ⑤ of the order code for your clamp assembly.

Metric ISO thread

Code: **M**

Unified coarse (UNC) thread

Code: **U**

All threaded parts are available with Metric ISO thread or unified coarse (UNC) thread according to dimension table.

⑥ Material & Surface Finishing

Please select the required material & surface finishing of the metal parts and add the corresponding **Code** to position ⑥ of the order code for your clamp assembly.

Metal parts made of Carbon Steel, zinc/nickel-plated **W3**

Metal parts made of Stainless Steel V2A
1.4301 / 1.4305 (AISI 304 / 303) **W4**

Metal parts made of Stainless Steel V4A
1.4401 / 1.4571 (AISI 316 / 316 Ti) **W5**

Weld Plate made of Carbon Steel, phosphated; Other
metal parts made of Carbon Steel, zinc/nickel-plated **W10**

Individual combinations of alternative materials and surface finishings are available upon request. Contact STAUFF for further information.

⑦ Assembling & Kitting

If required, please select an additional assembling and kitting option and add the corresponding **Code** to the last position of the order code for your clamp assembly.

Components supplied separately

Code: **none** (standard option)

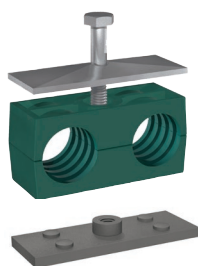
Components assembled

Code: **A** (special option)

Components packed in kits

Code: **K** (special option)




1x Hexagon Head Bolt

Surface: W3
Thread: Metric

1x Cover Plate

Surface: W3

1x Clamp Body (two halves)
STAUFF Group 1D (DIN 1)
both O.D. 6 mm / .24 in
Material: Polypropylene
Profiled inside surface
with tension clearance

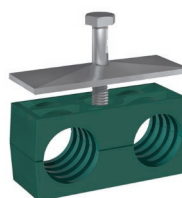
1x Weld Plate

Surface: W2
Thread: Metric

Order Code

SP-106/06-PP-GD-AS-M-W10

W10 is the standard option for this type of installation.


1x Hexagon Head Bolt

Surface: W3
Thread: Metric

1x Cover Plate

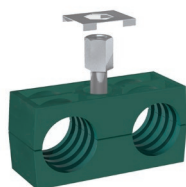
Surface: W3

1x Clamp Body (two halves)
STAUFF Group 1D (DIN 1)
both O.D. 6 mm / .24 in
Material: Polypropylene
Profiled inside surface
with tension clearance

Order Code

106/06-PP-GD-AS-M-W3

W3 is the standard option for this type of installation.


1x Stacking Bolt

Surface: W3
Thread: Metric

1x Safety Locking Plate (Type SI)

Surface: W3
Thread: Metric

1x Clamp Body (two halves)
STAUFF Group 1D (DIN 1)
both O.D. 6 mm / .24 in
Material: Polypropylene
Profiled inside surface
with tension clearance

Order Code

106/06-PP-SI-AF-M-W3

W3 is the standard option for this type of installation.


1x Stacking Bolt

Surface: W3
Thread: Metric

1x Safety Locking Plate (Type SIV)

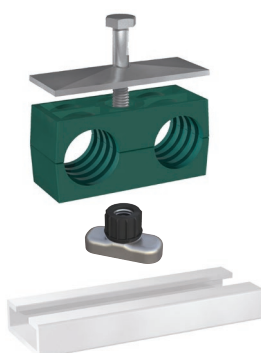
Surface: W3
Thread: Metric

1x Clamp Body (two halves)
STAUFF Group 1D (DIN 1)
both O.D. 6 mm / .24 in
Material: Polypropylene
Profiled inside surface
with tension clearance

Order Code

106/06-PP-SIV-AF-M-W3

W3 is the standard option for this type of installation.
This type of installation is available up to STAUFF Group 3D only.


1x Hexagon Head Bolt

Surface: W3
Thread: Metric

1x Cover Plate

Surface: W3

1x Clamp Body (two halves)
STAUFF Group 1D (DIN 1)
both O.D. 6 mm / .24 in
Material: Polypropylene
Profiled inside surface
with tension clearance

1x Hexagon Rail Nut

Surface: W3
Thread: Metric

Order Code (Mounting Rail TS not included.)

SM-106/06-PP-GD-AS-M-W3

W3 is the standard option for this type of installation.

Thread Codes

All threaded parts are available with Metric ISO thread or unified coarse (UNC) thread according to dimension table.

Metric ISO thread
Unified coarse (UNC) thread

M
U

Material Codes

The below listed material codes describe the materials and surface finishings of metal parts that are most relevant for Twin Series clamp assemblies. Individual combinations of alternative materials and surface finishings are available upon request. Contact STAUFF for further information.

Metal parts made of Carbon Steel, zinc/nickel-plated	W3
Metal parts made of Stainless Steel V2A: 1.4301 / 1.4305 (AISI 304 / 303)	W4
Metal parts made of Stainless Steel V4A: 1.4401 / 1.4571 (AISI 316 / 316 Ti)	W5
Weld Plate made of Carbon Steel, phosphated	W10
Other metal parts made of Carbon Steel, zinc/nickel-plated	

